

# Model NR83(GQ-2457WS-FFA US) Series Residential Tankless Water Heater Specification Sheet

- **Standard Input** - gas consumption ranges from 18,000 BTUh to 180,000 BTUh
- **Capacity Range** - flow rates from 0.5 gpm up to 8.3 gpm
- **Compact Design** - ANSI Z21.10.3/CSA 4.3 certified design that can be wall-mounted indoors
- **Durable Steel Casing with Polyester Coating**
- **Heat Exchanger** - manufactured with commercial grade copper, 25% thicker piping than standard models
- **Venting** - concentric direct vent (DVC) design that uses 5"/3" Noritz concentric stainless steel vent pipe and is rated for zero clearance
- **Direct Electronic Ignition**
- **Quick-Connect** - two identical units can be linked together by using the optional Quick Connect Cord for twice the hot water capacity
- **Uniform Energy Factor (UEF)** - 0.81 (NG) / 0.81 (LP)
- **Temperature Controls** - includes remote thermostat attached to the front panel that can precisely adjust the output temperature from 115°F to 140°F and display temperatures in both °C and °F
- **Power Cord Kit** - comes pre-installed with 6' power cord
- **Safety Devices** - Flame Sensor, Overheat Prevention Device, Lightning Protection Device, Freeze Protection, Thermal Fuse, Fan Rotation Detector
- **Additional Features** - Temperature Lockout, High Elevation Adjustment, New Scale Detection Function
- **12-Year\* Limited Heat Exchanger Warranty for Residential Use**
- **5-Year Limited Parts Warranty**
- **1-Year Reasonable Labor**
- **Approvals** - CSA, UPC\*\*, NSF, Low NOx Approved by SCAQMD [ $<14\text{ng/J}$  or 20ppm]



NR83DVC

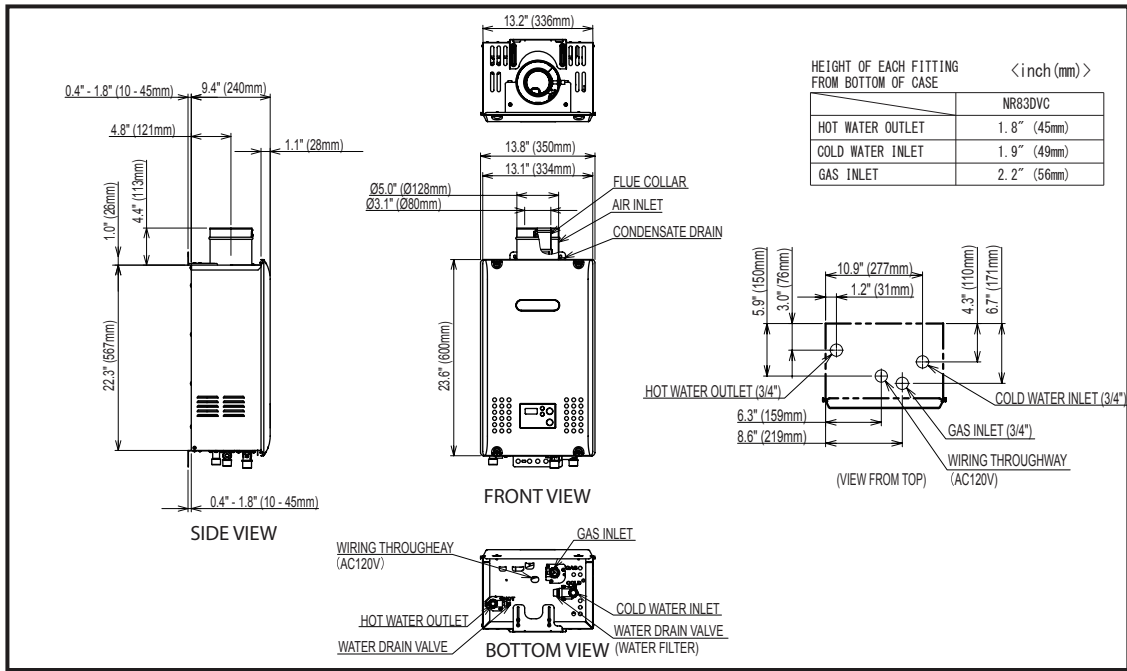
<p><b>Model</b> NR83DVC</p> <p><b>Accessories</b></p> <p><input type="checkbox"/> Isolation Valves (#IK-WV-200-1-(SW / TH)-LF)</p> <p><input type="checkbox"/> Pipe Cover (#PC-2S)</p> <p><input type="checkbox"/> Quick Connect Cord (#QC-2)</p>
---



\* Heat Exchanger warranty is maintained at 12 years or 6500 operational hours, whichever occurs first, when used in a single family dwelling in conjunction with a controlled recirculation system (an aquastat being the minimum pump control requirement) in accordance with the Installation Manual. Refer to the Noritz Limited Warranty for complete coverage details

\*\* This product complies with California AB 1953 Low Lead Law and Section 1417(d) of the Safe Drinking Water Act

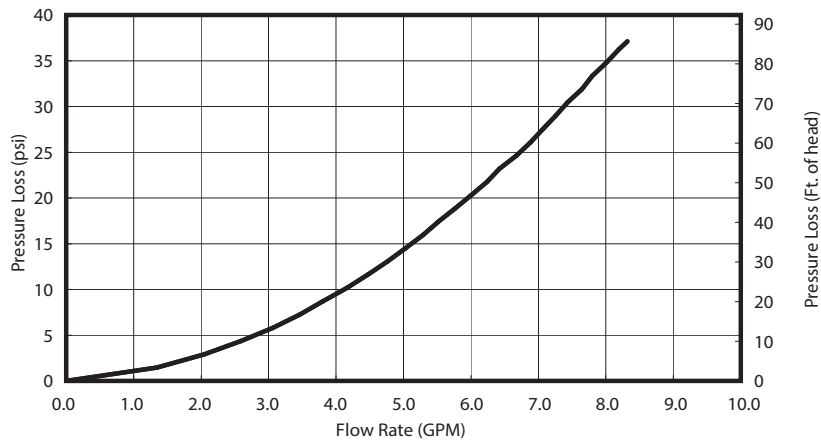
## Dimensions



## Flow Rates

Temperature Rise (°F)	30	40	45	50	60	70	80	90	100
Flow Rate (GPM)	8.3	7.6	6.7	6.1	5.0	4.3	3.8	3.4	3.0

## Pressure Loss



## Specifications

Model Name		NR83DVC (GQ-2457WS-FFA US)
Weight		49 (pounds)
Water Holding Capacity		0.2 Gallon (0.95 L)
Connection Sizes	Water Inlet	3/4"
	Hot Water Outlet	3/4"
	Gas Inlet	3/4"
Power	Supply	120VAC (60Hz), less than 2 amperes
	Consumption	NG: 82W LP: 90W Freeze Prevention 161W
Freeze Protection		Indoor: -30°F
Temperature Settings	°F Mode	115-140°F (In 5°F intervals) (6 Options)
	°C Mode	46,47,48,50,55,60°C (6 Options)
Default Temperature Options	°F Mode	120, 125, 130, 140°F (Default is 120°F)
	°C Mode	50, 52, 55, 60°C (Default is 50°C)