



**Get
4 MORE YEARS
with ProtectionPlus™**

Available in 29, 38, 40 and 50 Gallon Tall – 30, 40 and 50 Gallon Short Gas Models

- ▶ **6-Year Limited Tank and Parts Warranty***
- ▶ **With ProtectionPlus™ the 6-Year Limited Tank Warranty Becomes 10 Years!**

Guardian System™

- One-of-a-kind air/fuel shut-off device offers double protection
- Maintenance free – no filter to clean
- Standard replacement parts

Environmentally Friendly Burner

- Low NOx design for low nitrous oxide emissions

Self-Cleaning

- EverKleen™ patented system fights sediment build-up
- Reduces fuel costs
- Provides more hot water

Easy to Light

- No matches required

Energy Efficient

- More hot water at low operating cost

Longer Life

- Patented magnesium anode rod design incorporates a special resistor that protects the tank from rust

High Altitude Compliant

- All models are certified for applications up to 6,000 feet above sea level. Some models are certified up to 10,200 feet above sea level. Check factory for listings

Plus...

- Brass drain valve and temperature and pressure relief valve are included
- Meets or exceeds National Appliance Energy Conservation Act (NAECA) requirements

High Efficiency Models Feature:

- High performance and lower operating cost
- Compliant with many gas utility incentive programs

*See Residential Warranty Information Brochure for complete warranty information.

Energy Factor and Average Annual Operating Costs based on D.O.E. (Department of Energy) test procedures. D.O.E. national average fuel rate natural gas \$1.218/therm; LP \$1.87/gallon.



TYPE	DESCRIPTION		FEATURES					ROUGHING IN DIMENSIONS (SHOWN IN INCHES)									ENERGY INFO.	
	GAL. CAP.	MODEL NUMBER	GAS INPUT IN THOUS. BTU/HR.		RECOVERY IN G.P.H. 90° RISE		FIRST HOUR DEL. G.P.H.	HT. TO VENT	TANK HT.	DIAM.	HT. TO GAS CONN.	VENT SIZE	WATER CONN. CNTR.	HT. TO SIDE T&P	WATER CONN.	SHIP. WT. (LBS)	ENERGY FACTOR NAT.	AVG. ANN. OPER. COST NAT.
			NAT.	LP	NAT.	LP	NAT.	A	B	C	D	E	F	G	H			
TALL	40	42VR40-40F	40	34	40.4	34.3	68	63-1/4	59-3/4	21	14-1/2	3	8	53-1/2	3/4	135	0.62	\$294
	50	42VR50-40F	40	36	40.4	36.4	83	62-1/4	58-3/4	23	14-1/2	3	8	52-1/2	3/4	165	0.62	\$294
TALL	29	22V30F	32	30	32.3	30.3	50	59-3/4	56-3/8	16-1/8	14-1/2	3	8	50-3/4	3/4	100	0.62	\$294
	40	22V40-36F1	36	-	36.4	-	67	61-1/2	58	17-3/4	14-1/2	3	8	53	3/4	120	0.59	\$309
	40	22V40F1	38	32	38.4	32.3	73	61-3/4	58-3/8	18-1/8	14-1/2	3	8	52-1/4	3/4	120	0.59	\$309
	38	42V40F	40	34	40.4	34.3	68	61-1/2	57-3/4	19-3/4	14-1/2	3	8	52-1/4	3/4	125	0.60	\$304
	50	22V50F1	38	36	38.4	36.4	90	61-1/2	58-1/4	20-1/8	14-1/2	3	8	51-3/8	3/4	130	0.58	\$315
	50	42V50-40F	40	36	40.4	36.4	83	61-1/2	58	21-3/4	14-1/2	3	8	52-1/2	3/4	150	0.58	\$315
	50	42V50-50F	50	-	50.5	-	83	62	58	21-3/4	14-1/2	4	8	52-1/2	3/4	150	0.58	\$315
SHORT	30	22V30S-30F	30	-	30.3	-	50	49-3/4	46-1/4	19-3/4	14-1/2	3	8	40-1/4	3/4	98	0.61	\$299
	40	22V40SF	36	34	36.4	34.3	72	52-3/4	49-3/8	20-1/8	14-1/2	3	8	42-3/4	3/4	130	0.59	\$309
	40	42V40SF	40	36	40.4	36.4	72	53-7/8	50-1/2	20-1/8	14-1/2	3	8	44	3/4	130	0.59	\$309
	50	42V50SF	40	36	40.4	36.4	84	54-1/4	49-3/4	22-1/4	14-1/2	3	8	44	3/4	158	0.59	\$309

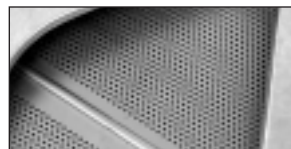
SPECIFY LP GAS WHEN ORDERING. Add "P" suffix to the model number. Example: 42VR40-40PF.
 • For SCAQMD rule 1121 compliance models (California only), add "SQ" suffix to the model number. Example: 42VR40-40FSQ.

Rheem Guardian System Features...



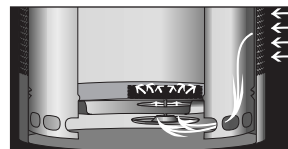
Exclusive Combustion Shut-off System

Should a spill incident occur, the Guardian System shuts off the gas supply and the air supply preventing a sustained vapor burn in the combustion chamber.



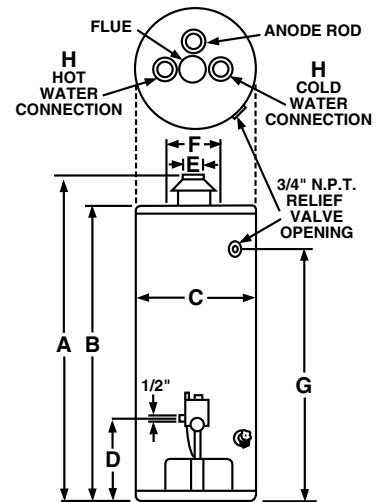
Flame Arrestor Plate

A specially-designed flame arrestor prevents ignition of vapors outside the combustion chamber.



Maintenance Free

Superior air filtration prevents the flame arrestor from becoming clogged by lint, dust and oil.



These units are designed to meet or exceed ANSI (American National Standards Institute) requirements and have been tested according to D.O.E. test procedures and meet or exceed the energy efficiency requirements of NAECA, ASHRAE standard 90, ICC Code and all state energy efficiency performance criteria for energy consuming appliances.

Before purchasing this appliance, read important energy cost and efficiency information available from your supplier.

PROTECTIONPLUS™
6 YEAR LIMITED TANK WARRANTY BECOMES 10

For more details, see form 101-7.

In keeping with its policy of continuous progress and product improvement, Rheem reserves the right to make changes without notice.